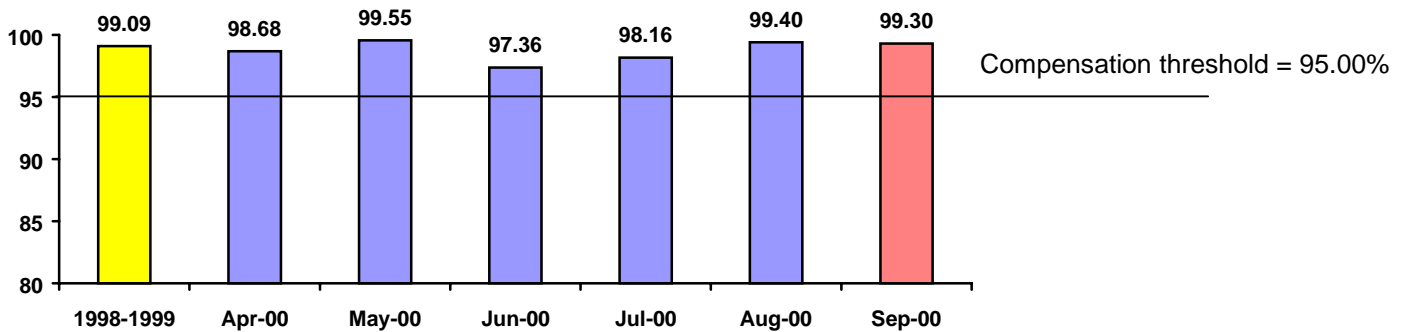


Broadmeadows Line Performance September 2000

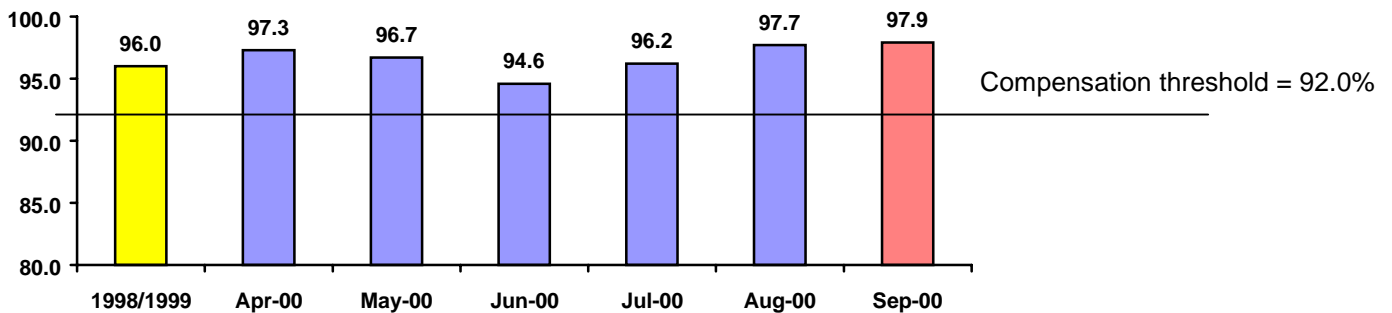
Reliability – Broadmeadows Line

The number of timetabled trains that ran



Punctuality – Broadmeadows Line

The number of trains that arrived within five minutes of their scheduled time



The compensation threshold is the minimum service level established by government, below which, compensation is payable.

SEPTEMBER PERFORMANCE

Bayside Trains launched its Customer Service Charter in May. In the Charter, we pledged to provide compensation, in the form of complimentary tickets, to passengers with monthly, six-monthly or annual tickets if our average monthly performance fell below levels agreed with the Government.

We are pleased to confirm that performance in September was above these compensation thresholds.

For more information, please call Customer Relations on 1800 800 120.

Performance results are published monthly
Reference BSC00/05
Display from: 11 October to 9 November 2000